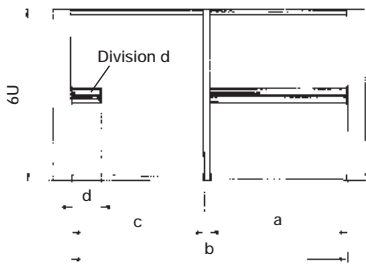
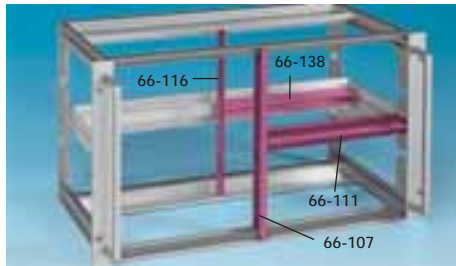


Adaptation kits

Subdivision



Width dividing kit 6U/3U

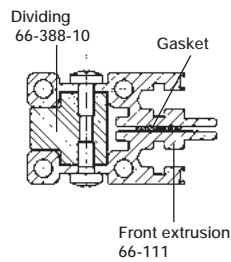
Usable width a	Width b				Standard	Type14
	42HP	63HP	81HP	84HP		
21HP	c = 19HP	c = 40HP	c = 58HP	c = 61HP	11-979-2	14-979-2
28HP	c = 12HP	c = 33HP	c = 51HP	c = 54HP	11-969-2	14-969-2
32HP	c = 8HP	c = 29HP	c = 47HP	c = 50HP	11-959-2	14-959-2
42HP	–	c = 19HP	c = 37HP	c = 40HP	11-949-2	–
63HP	–	–	c = 16HP	c = 19HP	11-939-2	–

complete incl. fixing material

Division d

Width d	4HP	8HP	12HP	16HP
complete incl. fixing material	80-204-11	80-208-11	80-212-11	80-216-11

EMC front card mounting



Width	Part No.	EMC gasket
42HP compl. set	63-837-42	7739-35 *
63HP compl. set	63-837-63	7739-36 *
84HP compl. set	63-837-84	7739-37 *

* as spare part; included in the set

Horizontal card mounting kit



Horizontal card mounting kit for double eurocards (6U)

independent of card depth

Mounting height	Usable height	DIN 41612	Backplane	Cover plate top *	Cover plate bottom *
2U	12HP	–	14-961-60	21N604-90	21N605-90
3U	20HP	14-971-30	14-971-60	21N602-90	21N602-90
4U	28HP	–	14-981-60	21N602-90	21N603-90
5U	36HP	–	14-973-60	21N611-90	21N610-90
6U	48HP	–	14-991-60	21N606-90	21N607-90

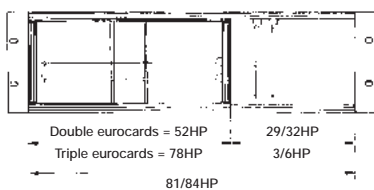
* Fixing material has to be ordered separately, see page 134–137

Horizontal card mounting kit for triple eurocards (9U)

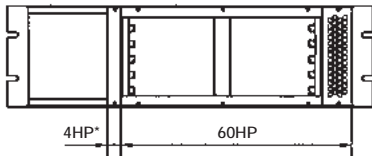
independent of card depth

Mounting height	Usable height	DIN 41612	Backplane	Cover plate top *	Cover plate bottom *
3U	20HP	–	14-972-60	21N902-90	21N902-90
4U	28HP	–	14-982-60	21N902-90	21N903-90

* Fixing material has to be ordered separately, see page 134–137



EMC horizontal card mounting kit



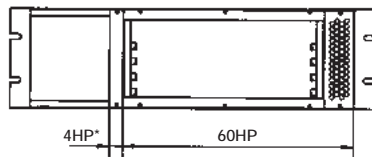
Fan module has to be on the right side of the horizontal card mounting kit.

EMC horizontal card mounting kit for double eurocards (6U) according to IEC standard

Card depth 160 mm

Mounting height	Usable height	for backplane mounting
4U	28HP	14-986-60

complete incl. fan tray with fan, speed sensor and connector (in pairs) and fixing material

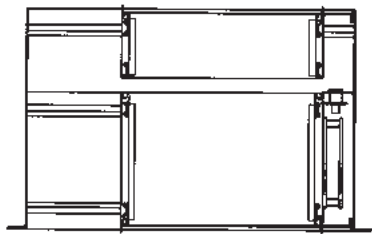


EMC horizontal card mounting kit for double eurocard (6U) according to IEEE standard (CompactPCI)

Card depth 160 mm

Mounting height	Usable height	for backplane mounting
4U	28HP	14-987-60

complete incl. fan tray with fan, speed sensor and connector (in pairs) and fixing material



for rear I/O, card depth 80 mm

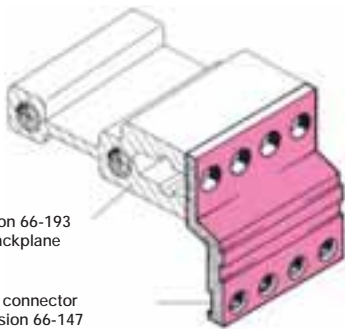
Mounting height	Usable height	for backplane mounting
4U	28HP	14-988-10

complete incl. perforated cover on side and fixing material

Top view

* This space is necessary for air flow.
Assemble blind panel or monitoring module.

Edge connector extrusion to fit extrusion for backplane (66-193)



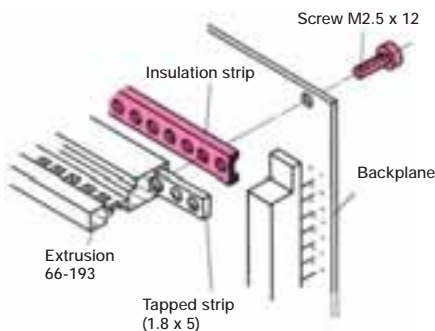
Extrusion 66-193 to fit backplane

Edge connector extrusion 66-147

for edge connector	Width			
	8HP	18HP	28HP	42HP
DIN 41612	66-147-40	66-147-41	66-147-42	66-147-63

Description	Part No.
Fixing material M2.5 (for 2 supplementary extrusions)	63-214

Assembly of backplane



Part	Width	Packing unit	Part No.
Insulation strip	42HP	1 piece	66-901-20
	63HP	1 piece	66-901-21
	81HP	1 piece	66-901-22
	84HP	1 piece	66-901-23

Part	Packing unit	Part No.
Screw to insulation strip M2.5 x 12	100 pcs.	1910-07